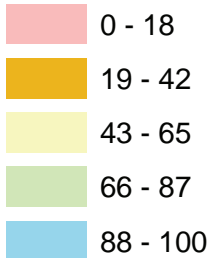


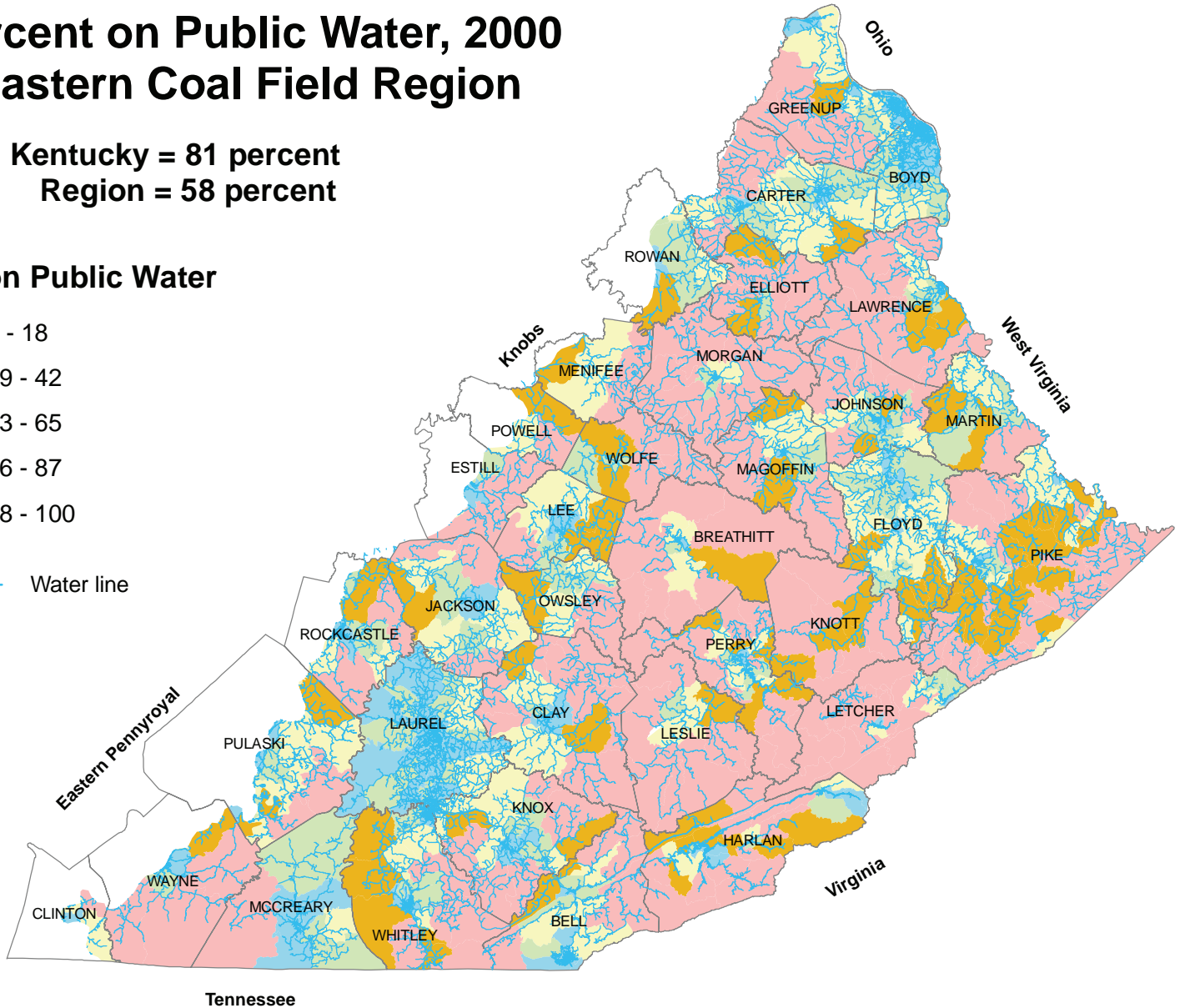
# Percent on Public Water, 2000 Eastern Coal Field Region

Kentucky = 81 percent  
Region = 58 percent

## Percent on Public Water



Water line



Placing the 2008 water line data (11,474 miles of pipeline) over 2000 public water census data shows areas where the expansion of public water service occurred during the eight-year period. The terrain of the region makes it a challenge to provide cost-effective public water to homes distant from communities.